


Shaft dia. mm inch	Bearing number	Nominal dimensions									Basic load ratings		Weight Kg		
		mm		inch							N				
		<i>d</i>	<i>D</i>	<i>Bi</i>	<i>C</i>	<i>n</i>	<i>s</i>	<i>G</i>	<i>F</i>	<i>ds</i>	dynamic Cr	static Cor			
25	UC X05 D1	25	62	38.1	19	15.9	22.2	6.0	4.7	M 6X0.75	19,500	11,300	0.39		
13/16	UC X05-13 D1	0.8125													0.44
7/8	UC X05-14 D1	0.8750	2.4409	1.5000	0.7480	0.6260	0.8740	0.2362	0.1850	1/4-28 UNF					0.42
15/16	UC X05-15 D1	0.9375													0.40
1	UC X05-16 D1	1.0000													0.38
30	UC X06 D1	30	72	42.9	20	17.5	25.4	6.5	4.6	M 8X1	25,700	15,300	0.58		
1-1/16	UC X06-17 D1	1.0625													0.60
1-1/8	UC X06-18 D1	1.1250	2.8346	1.6890	0.7874	0.6890	1.0000	0.2559	0.1811	5/16-24 UNF					0.59
1-3/16	UC X06-19 D1	1.1875													0.56
1-1/4	UC X06-20 D1	1.2500													0.55
35	UC X07 D1	35	80	49.2	21	19.0	30.2	8.0	4.6	M 8X1	29,100	17,800	0.74		
1-1/4	UC X07-20 D1	1.2500													0.78
1-5/16	UC X07-21 D1	1.3125	3.1496	1.9370	0.8268	0.7480	1.1890	0.3150	0.1811	5/16-24 UNF					0.77
1-3/8	UC X07-22 D1	1.3750													0.76
1-7/16	UC X07-23 D1	1.4375													0.72
40	UC X08 D1	40	85	49.2	22	19.0	30.2	8.0	4.9	M 8X1	32,500	20,400	0.83		
1-1/2	UC X08-24 D1	1.5000	3.3464	1.9370	0.8661	0.7480	1.1890	0.3150	0.1929	5/16-24 UNF					0.87
45	UC X09 D1	45	90	51.6	24	19.0	32.6	9.0	5.5	M 10X1.25	35,000	23,200	0.95		
1-5/8	UC X09-26 D1	1.6250													1.10
1-11/16	UC X09-27 D1	1.6875	3.5433	2.0315	0.9449	0.7480	1.2835	0.3543	0.2166	3/8-24 UNF					1.01
1-3/4	UC X09-28 D1	1.7500											0.97		
50	UC X10 D1	50	100	55.6	25	22.2	33.4	9.0	5.4	M 10X1.25	43,500	29,200	1.29		
1-7/8	UC X10-30 D1	1.8750													1.43
1-15/16	UC X10-31 D1	1.9375	3.9370	2.1890	0.9842	0.8740	1.3150	0.3543	0.2126	3/8-24 UNF					1.32
2	UC X10-32 D1	2.0000											1.26		

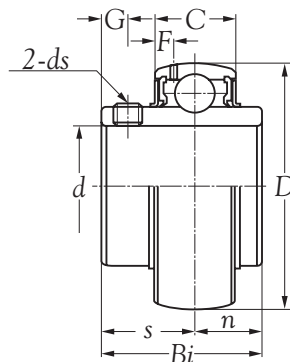
Remark: 1) Bearing with grease holes and grease groove.
2) Bearing without stop pin.

Remark: If you have more inquiry of technical, please inquire
SLB web-site: [Http://www.slbgroup.com](http://www.slbgroup.com).



Technical supplement

Cages	Slinger	Precision	Grease
Steel	Steel	Normal	Shell Alvania RLQ 2



Shaft dia. mm inch	Bearing number	Nominal dimensions									Basic load ratings		Weight Kg
		<i>d</i>	<i>D</i>	<i>Bi</i>	<i>C</i>	<i>n</i>	<i>s</i>	<i>G</i>	<i>F</i>	<i>ds</i>	dynamic Cr	static Cor	
55 2 2-1/16 2-1/8 2-3/16	UC X11 D1	55	110	65.1	27	25.4	39.7	10.5	5.9	M 10X1.25	52,500	36,000	1.80
	UC X11-32 D1	2.0000											2.01
	UC X11-33 D1	2.0625	4.3307	2.5630	1.0630	1.0000	1.5630	0.4134	0.2323	3/8-24 UNF			1.98
	UC X11-34 D1	2.1250											1.95
	UC X11-35 D1	2.1875											1.78
60 2-1/4 2-5/16 2-3/8 2-7/16	UC X12 D1	60	120	65.1	28	25.4	39.7	12	5.5	M 12X1.5	57,500	40,000	2.05
	UC X12-36 D1	2.2500											2.11
	UC X12-37 D1	2.3125	4.7244	2.5630	1.1024	1.0000	1.5630	0.4724	0.2166	1/2-20 UNF			2.08
	UC X12-38 D1	2.3750											2.03
	UC X12-39 D1	2.4375											1.95
65 2-1/2 2-9/16	UC X13 D1	65	125	74.6	30	30.2	44.4	12	6.1	M 12X1.5	62,000	44,000	2.52
	UC X13-40 D1	2.5000	4.9212	2.9370	1.1811	1.1890	1.7480	0.4724	0.2402	1/2-20 UNF			2.61
	UC X13-41 D1	2.5625											2.47
70 2-5/8 2-11/16 2-3/4	UC X14 D1	70	130	77.8	32	33.3	44.5	12	7.0	M 12X1.5	66,000	49,500	2.74
	UC X14-42 D1	2.6250											2.78
	UC X14-43 D1	2.6875	5.1181	3.0630	1.2598	1.3110	1.7520	0.4724	0.2756	1/2-20 UNF			2.76
	UC X14-44 D1	2.7500											2.75
75 2-13/16 2-7/8 2-15/16 3	UC X15 D1	75	140	82.6	33	33.3	49.3	14	7.5	M 12X1.5	72,500	53,000	3.41
	UC X15-45 D1	2.8125											3.50
	UC X15-46 D1	2.8750	5.5118	3.2520	1.2992	1.3110	1.9409	0.5512	0.2953	1/2-20 UNF			3.47
	UC X15-47 D1	2.9375											3.44
	UC X15-48 D1	3.0000											3.32
80 3-1/16 3-1/8	UC X16 D1	80	150	85.7	35	34.1	51.6	14	7.5	M 12X1.5	83,200	63,800	3.87
	UC X16-49 D1	3.0625	5.9055	3.3740	1.3780	1.3425	2.0315	0.5512	0.2953	1/2-20 UNF			3.93
	UC X16-50 D1	3.1250											3.90

Remark: 1) Bearing with grease holes and grease groove.
2) Bearing without stop pin.

Technical supplement

Cages	Slinger	Precision	Grease
Steel	Steel	Normal	Shell Alvania RLQ 2

Remark: If you have more inquiry of technical, please inquire
SLB web-site: [Http://www.slbgroup.com](http://www.slbgroup.com).